

F BLOCK S5 | EVENTS SPACE

F BLOCK S5

THE
TRUMAN
BREWERY

F BLOCK S5 | EVENTS SPACE



EVENTS



FASHION
SHOWS



PARTIES



EXHIBITIONS



TRADE
SHOWS



FILMING &
PHOTOGRAPHY



LICENSED

ABOUT

S5 is 8000 sqft of former warehouse space that has been sensitively redeveloped, maintaining the raw feel of the old warehouse and benefits from good natural light via glass brick skylights and clear windows. The space is further characterised by a blend of original and roughly whitewashed walls, and a raw concrete floor. Hired alone, the space is best suited for filming and photography requirements. Hired in conjunction with the other rooms on the second floor making up 30,000 sqft of event space, the spaces is well suited for exhibitions, filming and photo shoots, music videos, networking event, and trade shows.

ACCESS

Guest Access is subject to availability via adjacent rooms.
Lift access is subject to availability via S3.

ADDRESS

Ely's Yard, Hanbury Street,
London, E1 6QR

CAPACITY

Event specific

SIZE

7,722 sqft

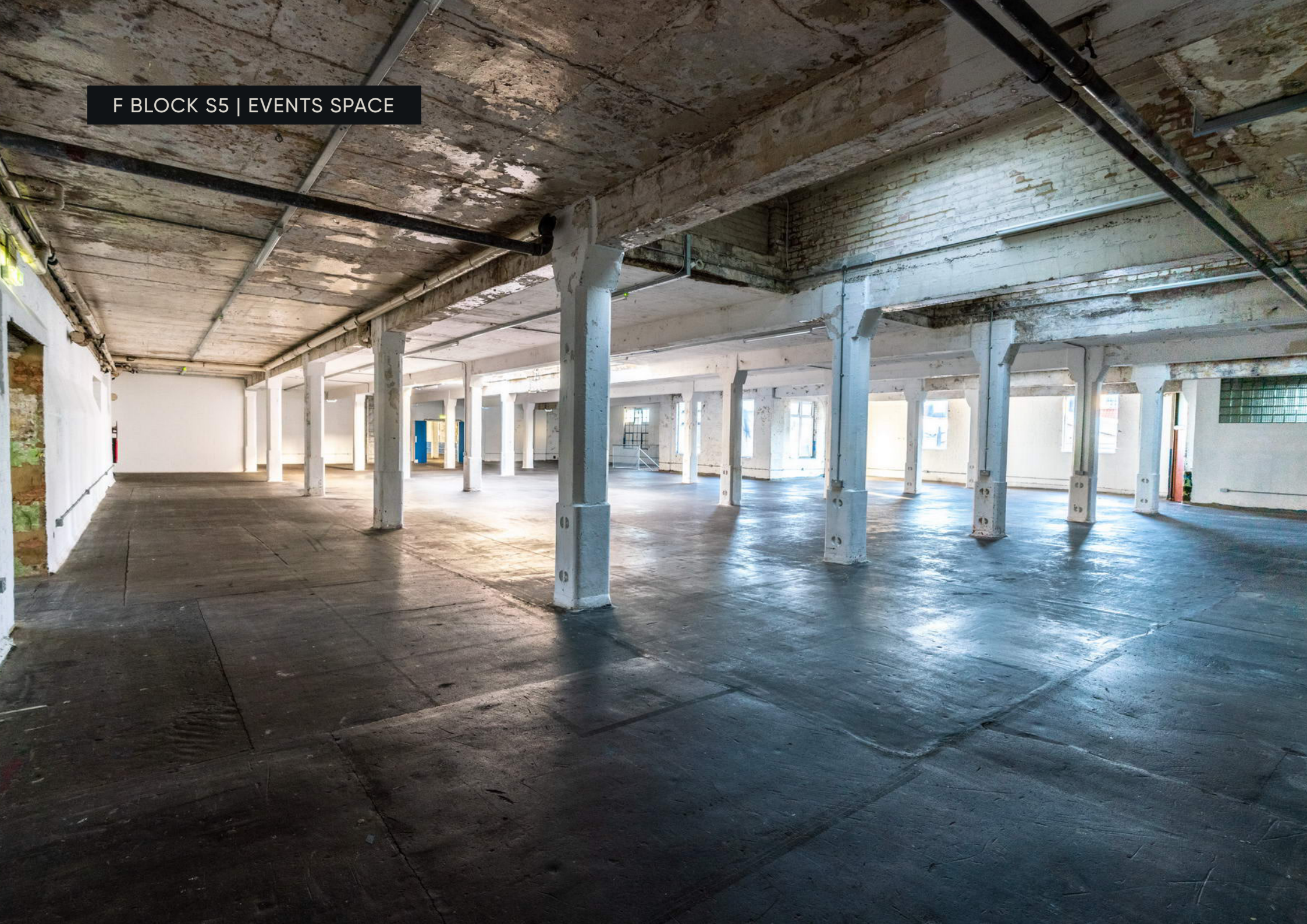
LEVEL

Second floor

CEILING HEIGHT

3.5m

F BLOCK S5 | EVENTS SPACE



LOCATION

S5 is located in the centre of the second floor of F Block. In one of London's most vibrant and energetic areas, known throughout London, the iconic Truman chimney and ever-active Estate is frequented by media, creative, fashion and tech industry denizens. The area attracts many thousands of visitors to the bustling work spaces, themed events, weekend markets, eye-popping street art, boutiques, cafes and rich diversity of restaurants.

LIGHTING

Strip Lights.

COMMS

The Truman Brewery's dedicated on-site service provider, TruTec Services, can easily provide support, networking, telephony and internet connectivity to this location.

POWER

1 x 63A 3 Phase C Form Socket.
Twin 13A Sockets throughout.

SERVICES

S5 does not benefit for dedicated toilets.

SUPPLIERS

We recommend the use of the following teams:

EVENT PRODUCTION:

E1 PRODUCTIONS

INTERNET CONNECTIVITY:

TRUTEC SERVICES

SECURITY:

Trusec Security Ltd.
Event Security Services

EVENT CLEANING SERVICES:

The Truman Brewery
Event Cleaning Services





THE TRUMAN BREWERY

A: 91 Brick Lane, London E1 6QL
 T: 0207 770 6011
 E: monika@trumanbrewery.com

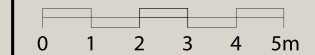
DRAWING NAME
F.02.S5

SPACE DETAILS
**F BLOCK
 2ND FLOOR - S5
 BASIC PLAN**

VENUE LOCATION
**F Block
 15 Hanbury Street
 London E1**

LEASE AREA (WITHIN RED BOUNDARY)
7722 sqft

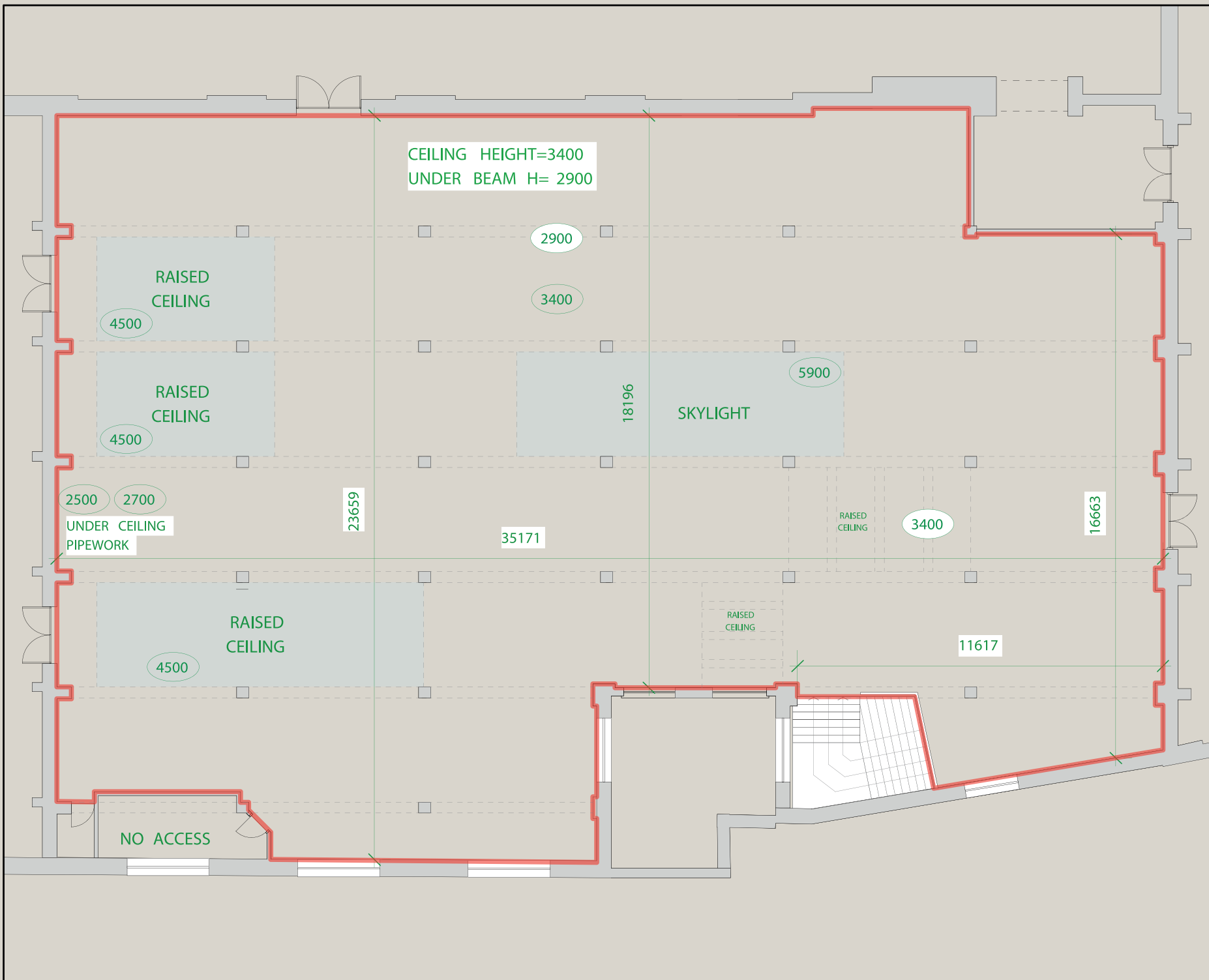
SCALE
1:160 @ A4



- NOTES
- SIGNIFIES CEILING STRUCTURES, MOSTLY BEAMS
 - CEILING HEIGHTS GIVEN IN MILLIMETRES ROUNDED DOWN

All measurements are approximate.
 Measurements in millimetres.

DO NOT SCALE.
 IF IN DOUBT ASK.





Single track
parking

249 OMO

TRANSPORT

F Block and The Truman Brewery have probably the most central Shoreditch location, and are easily reached by bus, rail, tube or on foot.

The venue benefits from close access to all forms of public transport. Liverpool Street and Shoreditch High Street stations are a short distance away, with Aldgate East within easy reach, offering fast connections across London and beyond.

Liverpool Street Station
Walking distance: 10 min

CENTRAL

CIRCLE

H&C

METROPOLITAN

NATIONAL RAIL

OVERGROUND

Shoreditch High Street Station
Walking distance: 5 min

OVERGROUND

Aldgate East Station
Walking distance: 10 min

DISTRICT

H&C

Whitechapel Station
Walking distance: 15 min

DISTRICT

H&C

OVERGROUND

Contact us to arrange a viewing:

Phone

+44(0)20 7770 6001

Email

events@trumanbrewery.com

Drop in

The Truman Brewery Events Department,
E y's Yard,
15 Hanbury Street,
London E1 6QR